

Sudhanshu IMPERIA LUXURY APARTMENTS

Site Address:

Sudhanshu Imperia

C.T.S. No. 44(part), 45(part) & 51(part),
Village Kanjur, Shivaji Nagar, Tembipada Road,
Opp. Ekroop Mitra Mandal, Bhandup (W), Mumbai-400078.

Marketing & Sales: 022 25953949 / +91 9819561524



Relationships beyond banking



Actual View of Powai-Lake



Architect:
Prabhakar Satam & Associates
Mulund (East)

R.C.C. Consultant:
Vinayak Chopdekar & Associates
Thane (West)

Legal Advisor:
G. S. Bhat
Mulund (West)



Builders and Developers

SUDHANSHU INFRASTRUCTURES PVT. LTD.

B-24/24A, Aniraj Tower, Opp. Kaka Petrol Pump, L.B.S. Marg,
Bhandup (West), Mumbai-400 078. Tel. No- (022) 25953949 / 48.

E-mail : sudhanshu_infra@yahoo.in | Website : www.sudhanshuinfra.com

Note: The conditions of the brochure are purely conceptual and have no legal binding on us. Developers reserve the right to amend the layouts, elevation and colour schemes, specifications and other amenities without prior notice.

Sudhanshu IMPERIA LUXURY APARTMENTS

Your grand plans.
Our elegant structure



www.sudhanshuinfra.com



YATIN Advtg. 9820580072

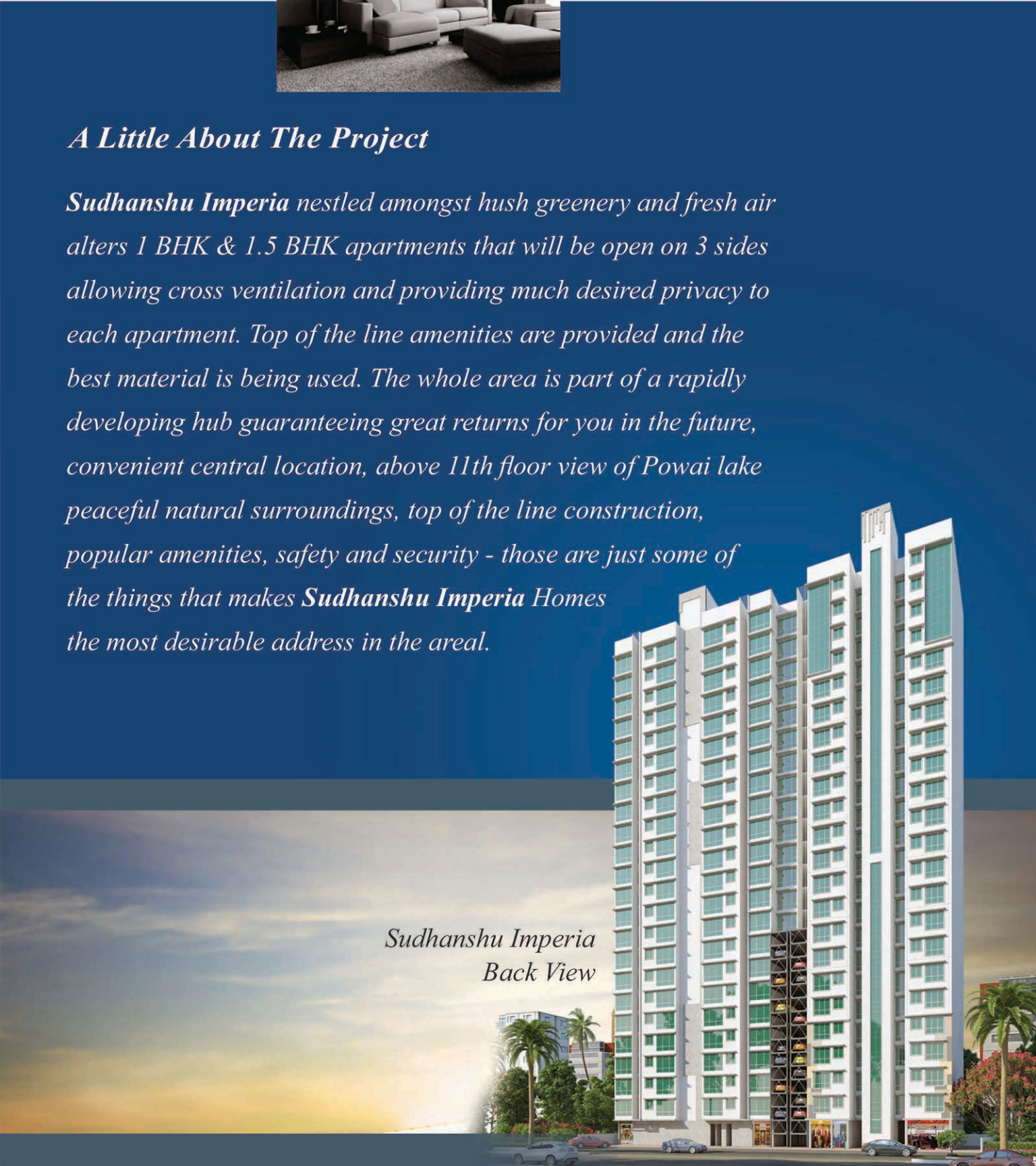


*Sudhanshu Imperia
Front View*

A Little About The Project

Sudhanshu Imperia nestled amongst lush greenery and fresh air offers 1 BHK & 1.5 BHK apartments that will be open on 3 sides allowing cross ventilation and providing much desired privacy to each apartment. Top of the line amenities are provided and the best material is being used. The whole area is part of a rapidly developing hub guaranteeing great returns for you in the future, convenient central location, above 11th floor view of Powai lake peaceful natural surroundings, top of the line construction, popular amenities, safety and security - those are just some of the things that makes **Sudhanshu Imperia Homes** the most desirable address in the area.

*Sudhanshu Imperia
Back View*



Ground Floor Plan

Puzzle Parking Tower

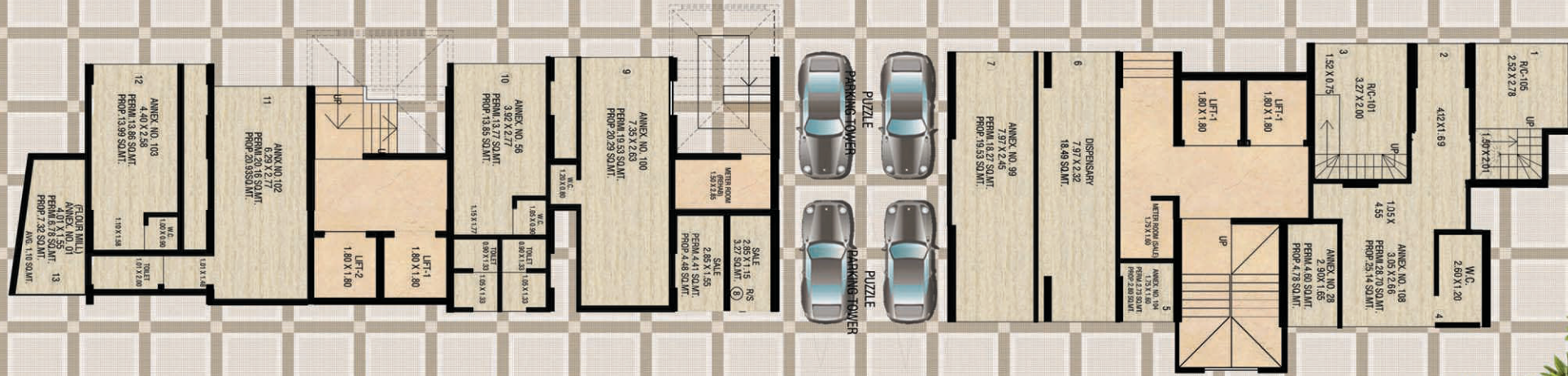


Two high speed elevators from standard company



EXISTING TEMBHIPADA ROAD

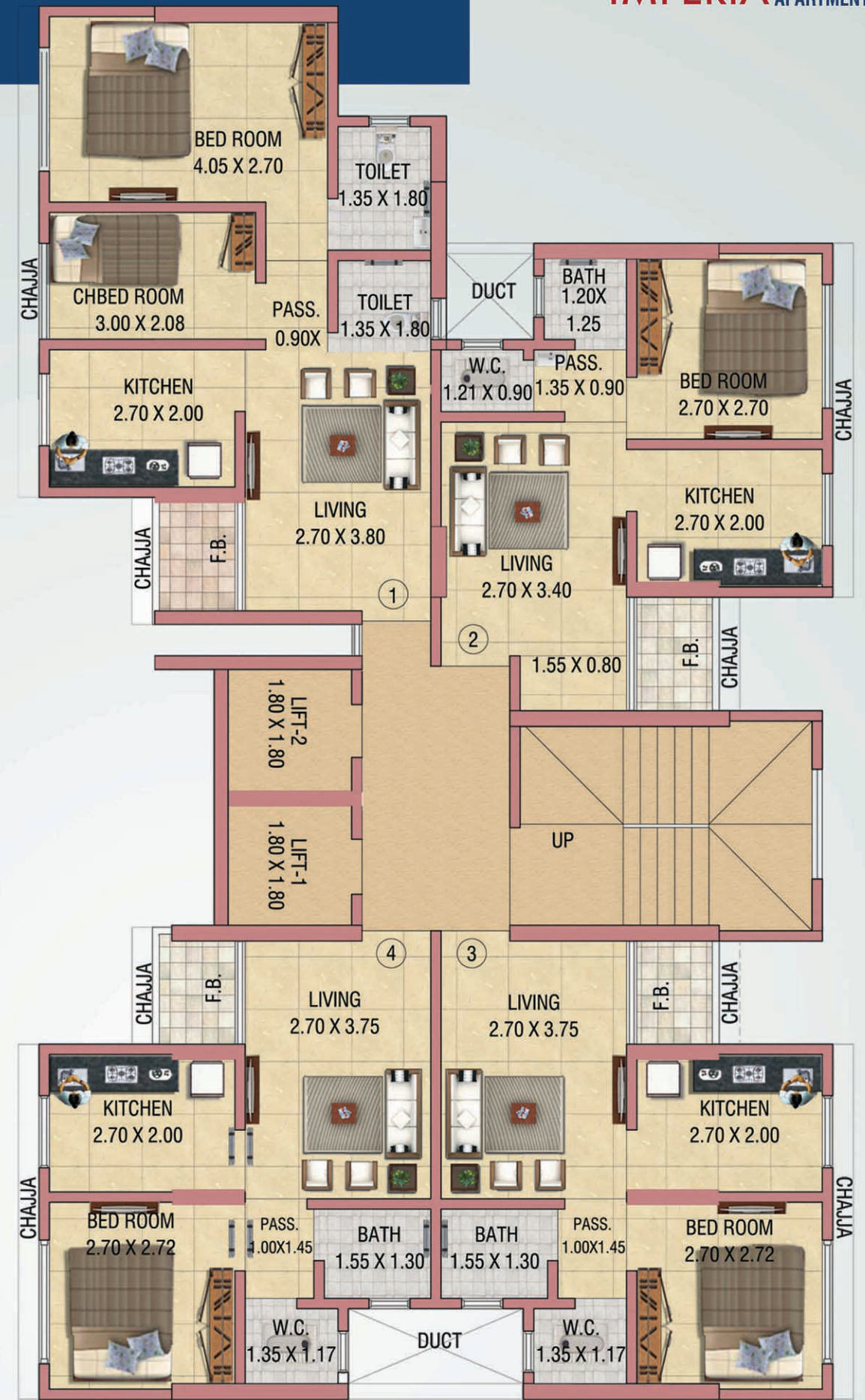
27.45 D.P. ROAD



1st Floor Plan



Typical Floor Plan 2nd to 7th Floor, 9th to 14th & 16th to 22nd Floor Plan



Refuge Floor Plan

8th & 15th Floor Plan



Convenience....

...where you'll find everything within your reach.

Sudhanshu Imperia located at 15 minutes walking distance from Bhandup Railway Station on the west side. With excellent location near the railway stations, LBS Road and highway, a perfect dream location with modern day amenities and beautiful lush green surroundings. An obvious advantage as our project is situated in peaceful & Traffic Free Environment. Well equipped by all means of Entertainment & Educational facilities as it is conveniently placed near Sports Complex, Multiplex Mall, Supermarkets & Shopping Centre, ATM's, Leading Schools & Colleges. Moreover the project is built to the highest quality standards & is priced quite reasonably.

So, come and experience its **Sudhanshu Imperia's** conveniences.

- Bhandup railway station - (10 to 15 minutes walk)
- Highway connects LBS Marg and Jogeshwari Link Road (10 - 15 Min drive)
- Chhatrapati Shivaji International Airport (30 - 40 Min drive)
- Close Estern Expressway (10 - 15 Min drive)
- Bandra-Worli Sea Link Toll Gate (40 - 45 Min drive)



Terrace Floor Plan



Invulnerable

...where you'll feel safe & secure

Fretful you won't be! A home where you would be assured of quality construction, contemporary design and your families well being, so cast away all your worries, as you would be provided with Video door phone, Vastu complete based apartments and power backup 24x7 for common areas.

So, come and experience your living at Sudhanshu Imperia.

- Shops & 1 wing of 22 storeys
- Earthquake resistant RCC structure
- Power backup for common lighting & lift
- Video Door Camera
- Puzzle parking
(Up to 8 Floor Tower parking)
- Two lifts from standard company.
- Overhead and underground water tanks.
- Glass fence fitting
(for terrace & flower beds)
- Open Trace with children park
- Modular kitchen
- Split AC for living room & each bed rooms



Sumptuousness...

...where you'll find peace of mind

Opulence wouldn't be the only reason! An eminent lifestyle is guaranteed at Sudhanshu Imperia, where unmatched luxurious amenities would make your aspirations come true.

So, come and experience the grandeur of living at Sudhanshu Imperia.

LIVING ROOM

- French windows (full height windows) attached to living rooms.
- Concealed wiring with appropriate switches and circuit breaker.
- Vitrified 24" x 24" flooring with skirting.
- Anti-skid vitrified tiles in living room deck.
- Concealed telephone and cable point provided.
- Split Air condition for living room.

BEDROOMS

- Vitrified 24" x 24" flooring with skirting.
- Master Bedrooms with attached bathroom.
- Designer lights and Modular switches.
- Split Air condition Unit in bedroom.

KITCHEN

- Vitrified flooring and Granite counter top with stainless steel sink & drain board.
- Utility area.
- Decent and attractive tiles for kitchen walls..
- Stylish and trendy Modular kitchen

BATHROOMS

- Anti-skid tiles for the floor and fully glazed tiles up to ceiling for the walls.
- Concealed plumbing with Quality sanitary fittings and sanitary ware of reputed brand.
- Appropriate counter top basin will be provided.
- Concealed plumbing with standard quality fittings.

BALCONIES

- Appropriate façade finish will be provided.
- Weather coat emulsion paint will be applied.
- Glass fence fitting. (for terrace & flower beds)

SECURITY

- Intercom & CCTV 24X7 Hi-tech security.

